



**Meramec Elementary School
Community Forum**



Agenda

- Welcome & Introduction
- Future of Education
- Context
- Long Range Facility Master Plan Process
 - Assessments Process
 - District & Community Engagement Opportunities
 - Subcommittee Meetings Recap
 - Remaining Schedule
- Review Results:
 - Utilization
 - District Wide Common Themes
 - Hawkins Lilley School Appraisal Results
 - High Priorities
- Community Discussion & Feedback



Context

- Guiding Questions for Facility Goals
 - Does this facility elevate our learners or hold them back?
 - Do you want to grow this facility, or do you want something completely new?
 - What do we want this facility to be for the next 10 to 20 years?



Comparative Districts' Upgrades

Ladue School District

- Will have renovated all 4 elementary schools and 1 middle school by end of 2024.

Lindbergh School District

- Will have renovated/remodeled parts of all 6 elementary schools, both middle schools, 1 high school, and 1 early childhood center by beginning of 2027.
- Will have built new gyms/storm shelters at 3 of their elementary schools, a PK-12 agricultural STEM learning center, and a district wide Support Services Center by beginning of 2027.

Parkway School District

- Will have renovated parts of all 19 elementary schools, all 5 middle schools, all 5 high schools, and 1 early childhood center by end of 2028.

Pattonville School District

- Will have renovated/remodeled parts of all 5 elementary schools, 2 middle schools, 1 high school, 1 early childhood center, and their Academy of Innovation by middle of 2028.
- Will have built new gyms/storm shelters at 3 elementary schools and 1 of their middle schools by middle of 2025.



Clayton Strategic Goals

A place for everyone...

GOAL #1

We will ensure all learners, regardless of their identity, feel safe and valued.

Meeting these objectives will ensure Clayton graduates are:



Culturally Conscious



Empathetic



Self-Actualized



Collaborative

...to grow as learners...

GOAL #2

We will commit to the educational growth of our learners through an equitable, personalized and individualized learning experience.

Meeting these objectives will ensure Clayton graduates are:



Culturally Conscious



Intellectually Curious



Creative Thinker

...in head and heart.

GOAL #3

We will be dedicated to the personal growth of our learners in their social, emotional and physical well-being.

Meeting these objectives will ensure Clayton graduates are:



Empathetic



Self-Actualized



Collaborative



Long Range Facility Master Plan: Assessment Process

Site Assessments

- Assessed district's playgrounds, playfields, tracks, courts, parking lots, drives, exterior lighting, etc.

Facility Assessments

- Assessed each facility's floors, walls, and ceilings.
- Analyzed each facility's current and projected demographics to determine spatial utilizations and functional capacity.
- Documented district's long-term HVAC replacement plan.
- Assessed each facility's exterior building envelope, such as roofing, brick/masonry, & windows.
- Analyzed the district-wide building material standards.
- Utilized the Hawkins Lilley Guide for School Appraisal to measure the older buildings against 21st century educational requirements.

Safety Assessments

- District completed the Tier One Safety & Security Audit.

Demographic Assessments

- Analyzed the utilization through a district-wide demographic study.



Subcommittee Meetings Recap

Recap of Meeting #1

- Met with representatives from each building including Principals, Teachers, Staff, Students, & Parents
- Reviewed scope of work and deliverables
- Reviewed initial list of improvements identified from our walkthroughs with principals and admin and our own assessments

Recap of Meeting #2

- Reviewed the Overarching Priorities list at each school and asked them to prioritize them to use as the basis for our work moving forward
- Each sub-committee group voted, then followed up with a round table discussion of why each person chose one of their priorities
- Ensured consensus that we collectively identified the high priorities for each school



District & Community Engagement Opportunities

District Steering Committee

- 5 meetings plus joint meeting with Sub Committees at conclusion

Building Level Sub Committee (2 Meetings with Each Below)

- Captain ES
- Glenridge ES
- Meramec ES
- Wydown MS
- Clayton HS
- Family Center
- Athletics & Activities
- Coordinators of Curriculum
- Safety & Security

Community Forums (8 Small Group Community Forums)

- Captain ES
- Glenridge ES
- Meramec ES
- Wydown MS
- Clayton HS
- Family Center
- 2 District Wide

Board of Education

- 3 Meetings

Community Survey





LRFMP

SEPTEMBER	OCTOBER	NOVEMBER	DECEMBER	JANUARY
9/4 Sub Committees (Meramec, Captain, CHS)	10/1 Sub Committees (Family Center, Meramec, CHS)	11/6 Building Level Community Forum (Captain, CHS)	12/4 District Community Forum (CHS-Commons)	1/8 Joint Steering & Sub Committee (CHS-Commons)
9/4 BOE Meeting Update/Presentation	10/2 Sub Committees (Captain, Glenridge, Wydown)	11/7 Building Level Community Forum (Glenridge, Wydown)		1/22 Board of Education Meeting (Center of Clayton)
9/5 Sub Committee (Glenridge, Family Center, Wydown)	10/15 District Steering Committee	11/12 Building Level Community Forum (Family Center, Meramec)		
9/17 Special Meetings: Coordinators Council, Athletics and Activities and Safety and Security		11/12 District Community Forum (Wydown-Main Street)		
		11/20 District Steering Committee		
		11/20 BOE Meeting - Update/Presentation		

LRFMP: Utilization

2024-2025	2029-2030	2034-2035			2024-2025	2029-2030	2034-2035
Current Enrollment (#)	Projected Enrollment (#)	Projected Enrollment (#)	Core Classrooms; Specials (#)	Functional Capacity (#)	Current Utilization (%)	Projected Utilization (%)	Projected Utilization (%)
369	330	318	19; 17	366	101%	90%	87%

Spatial Utilization

- Clayton's overall district enrollment is projected to remain relatively steady.
- Resident enrollment at Meramec Elementary is projected to slightly decrease, which means the spatial utilization percentage will improve.
- Demonstrates that Meramec may not need more general classrooms but has the opportunity to increase specialized learning.

Utilization (%)	Capacity
95%+	Over Functional Capacity
90-94%	Approaching Over Capacity
80-89%	At Functional Capacity
70-79%	Approaching Underutilization
0-69%	Underutilized



LRFMP: District Wide Common Themes



Safety & Security

- Continue improvements from the Tier One Safety and Security Audit.
- Redesign existing site circulation and add parking where needed.
- Improve WiFi and cellular service.



Maintenance & HVAC

- Improve air quality and controls of HVAC units and systems.
- Replace aging infrastructure.
- Address acoustic performance.



Accessibility & Inclusiveness

- Increase quality of accessibility routes and features.



Curriculum & Programming

- Increase quantity of flexible spaces, large and small, for daily learner use.
- Design outdoor learning and nature spaces.

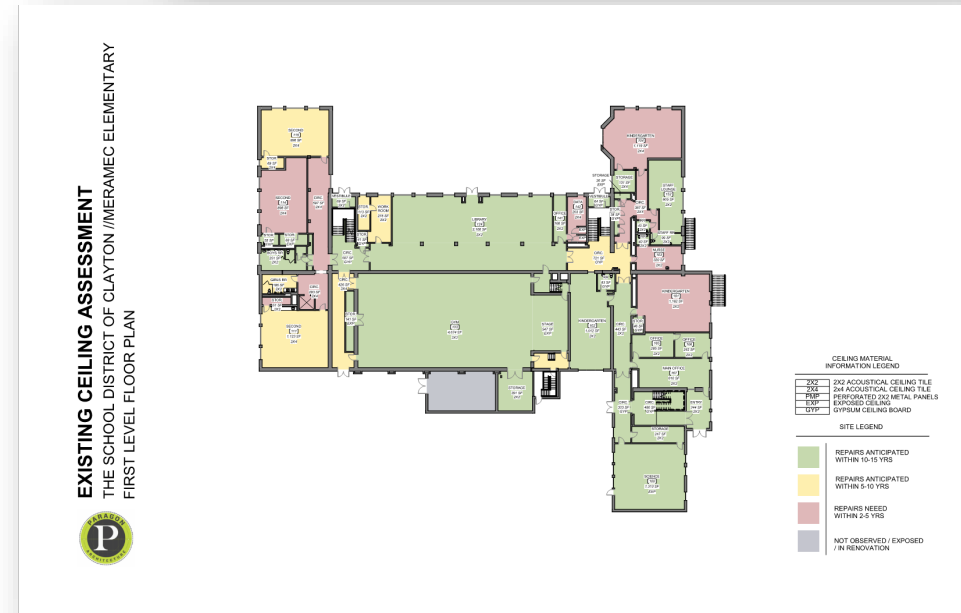
LRFMP: Assessment Results

Site Assessments

- Lighting site-wide needs improvement, especially surrounding the building and in the parking lot.
- Blacktop needs to be refreshed or replaced.
- Turf can be added to help reduce injuries and improve quality of play area.
- Parking lots and drives need to be redesigned and refreshed to provide better vehicular circulation.

Facility Assessments

- Finishes, particularly the wall and ceiling finishes, need to be updated across the facility.



LRFMP: Hawkins Lilley School Appraisal Results

The Hawkins Lilley School Appraisal is designed to provide the community a means to measure older buildings against 21st century educational requirements. It is designed to help decision makers reach informed and reasonable outcomes when assessing a facility as it currently functions to determine if a building should be *refreshed*, *renovated*, *adapted*, or *decommissioned*. The six appraisal criteria scores are below.

Meramec Elementary			
Section	Points Possible	Total Earned	Percent
1.0 Educational Adequacy	200	125	63%
2.0 Environment for Education	200	129	64%
3.0 The School Site	100	73	73%
4.0 Building Safety and Security	200	150	75%
5.0 Structural condition and Electrical/Mechanical Systems	200	142	71%
6.0 Plant Maintainability	100	72	72%
Total	1000	691	69%

Key	
90-100%	Excellent
70-89%	Satisfactory
50-69%	Borderline
30-49%	Poor



LRFMP: Hawkins Lilley School Appraisal Results

- Entry sequence is unclear, leads to confusion and visitors trying to access the building through inappropriate doors. This causes avoidable interruptions to student learning in addition to concern for student safety.
- Building lacks accessible entrances, exits, egress routes, and general circulation.
- Kindergarten classrooms are all undersized with other grade levels experiencing inequitable classroom space, creating inadequate learning environments.
 - Lack of storage, particularly in the undersized classrooms, further inhibits teachers from using their classrooms to their full flexibility. Items that should be in dedicated storage are taking up valuable teaching space.
- Lacking appropriate and dedicated spaces for student wellness. The counselor office is inappropriately located, there is no dedicated office for social worker, SRO, or support staff.
- Student classrooms and other learning spaces located in the basement lack appropriate access to ventilation and natural light.
 - Generally, in need of updates to heating, ventilation, and air conditioning for both student wellbeing and learning.
- Foot traffic and vehicular traffic often overlap at busy times of day due to exterior circulation paths being too concentrated. This causes concern for student safety.
- Shortage of parking for community events that welcome families and the community into the building
- Lacking space for community events, as the gym is undersized for both community events and to support multiple classes in the space at the same time. It is not properly supported by restrooms for students or staff during such events or throughout the school day.
- Overabundance of blacktop in play areas, leading to student injuries that could be avoided by providing green space for play and student wellness.



LRFMP: High Priorities



Maker Space / Innovation Lab Addition

- Includes a technology suite with a green room, podcasting space, videography space, etc.



Wellness Suite

- Includes counselor, OT, PT, small breakout rooms, social worker space, additional spaces as needed.



Turf Field



Improve Accessibility Facility-Wide

- Increase quantity and quality of accessible routes and features both interior and exterior.



Gym Expansion / Addition

- Provides space for school and community activities and expanded athletic programming and curriculum.



Classroom Addition / Renovations

- Ensure equity of classroom quality and size, while increasing space for orchestra, music, Kidzone, and other special programs.



Ground (Basement) Level Renovations

- Includes complete renovation of ground (basement) level with focus on HVAC, plumbing, finishes, etc.



Restroom Renovations / Additions

- Increase quantity and quality of restrooms for all learners, including students and staff/faculty.



Outdoor Learning Spaces

- Includes designed outdoor learning spaces, maker space, eating space, nature spaces, etc.

District Wide Common Themes

- Safety & Security
- Maintenance & HVAC
- Accessibility & Inclusiveness
- Curriculum & Programming



Instructions

- **Sign-in Sheets**
 - Please complete the forms at your tables.
- **General Questions**
 - Paragon and School District of Clayton staff will be at each station and floating around.
- **Glow & Grow**
 - With your small group, “Glow” and ask yourself the following questions:
 - “What are you proud of in Meramec Elementary School?”
 - “What parts of Meramec Elementary School are elevating our Learners?”
 - With your small group, “Grow” and ask yourself the following questions:
 - “What would you like to improve for Meramec Elementary School’s Learners?”
 - “What parts of Meramec Elementary School are hindering our Learners?”
- **Roundtable**
 - Nominate a speaker from your small group. Each speaker will report out **ONE** of their top take-aways, repeating the process until all groups have said all take-aways.



LRFMP: Next Steps

NOVEMBER	DECEMBER	JANUARY
11/6 Building Level Community Forum (Captain, CHS)	12/4 District Community Forum (CHS-Commons)	1/8 Joint Steering & Sub Committee (CHS-Commons)
11/7 Building Level Community Forum (Glenridge, Wydown)		1/22 Board of Education Meeting (Center of Clayton)
11/12 Building Level Community Forum (Family Center, Meramec)		
11/12 District Community Forum (Wydown-Main Street)		
11/20 District Steering Committee		
11/20 BOE Meeting - Update/Presentation		

Community Input

- District Community Forums
- Survey



Thank You!

